

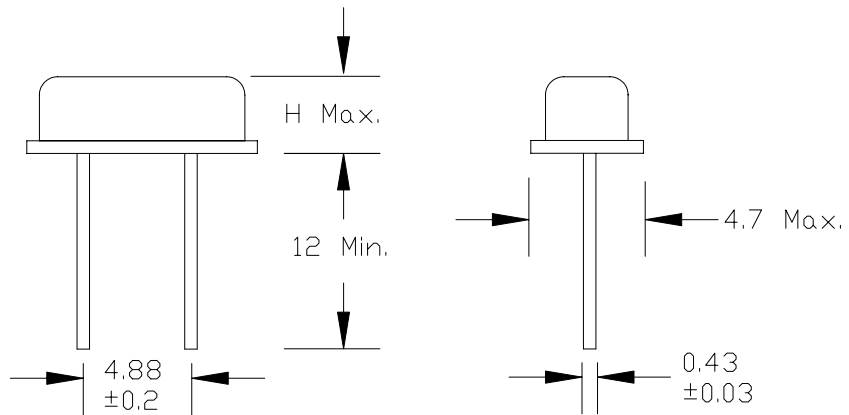


Leaded Crystal, AT cut
2 Lead Metal Package, 11 mm x 4.7 mm, Low Profile

HC49US Series

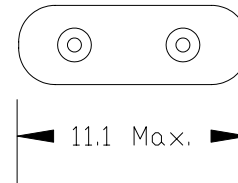
Frequency Range (MHz)	3.0 MHz to 90 MHz
Equivalent Series Resistance (Ω Max.)	Frequency and mode related, see table below
Shunt Capacitance (C0)	7 pF Max.
Frequency Tolerance	± 30 ppm Standard (see Appendix A for more options)
Frequency Stability over Temperature	± 50 ppm Standard (see Appendix A for more options)
Crystal Cut	AT Cut Standard, BT Cut Available for some Frequencies
Load Capacitance	18 pF Standard (see Appendix A for more options)
Drive Level	1 mW Max.
Aging	± 5 ppm Max. / Year Standard
Temperature	
Operating	0° C to +70° C Standard (see Appendix A for more options)
Storage	-40° C to +85° C Standard
Environmental	See Appendix B for information
Package Information	MSL = N.A., Termination = e1

Frequency (MHz)	Mode	ESR (Ω) Max.
3.0 to 3.4	Fund.	300
3.5 to 3.9	Fund.	200
4.0 to 4.9	Fund.	150
5.0 to 5.9	Fund.	120
6.0 to 6.9	Fund.	100
7.0 to 8.9	Fund.	80
9.0 to 12.9	Fund.	60
13.0 to 19.9	Fund.	40
20.0 to 29.9	Fund.	30
30.0 to 36.0	Fund.	25
30.0 to 90.0	3 rd	100



HC49US, H Max. = 3.5
 HC49US2, H Max. = 2.5
 HC49US3, H Max. = 2.0

Dimension Units: mm



Vinyl sleeve, 3rd wire lead, base insulator, cut leads are available with this part. See Appendix A or consult ILSI America.

Part Number Guide		Sample Part Number: HC49US - FB1F18 - 20.000				
Package	Frequency Tolerance	Frequency Stability	Operating Temp.	Mode	Load Capacitance	Frequency
HC49US -	F = ± 30 ppm	B = ± 50 ppm	1 = 0° C to +70° C	F = Fundamental	18 = 18 pF	- 20.000 MHz

ILSI America Phone: 775-851-8880 • Fax: 775-851-8882 • e-mail: e-mail@ilsiamerica.com • www.ilsiamerica.com